

Cloning Tool-Walkthrough

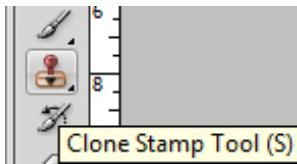
The clone stamp tool takes data from one area and applies it to another-essentially “cloning” one area over another.

There are three main ways we can use this tool.

1. The first is cloning a duplicate of an object.
Take the golf ball for instance:



If we wanted to golf ball sitting in the grass we would use the clone stamp tool.



Click on the clone stamp tool.

To mark the spot that you will be taking data from, place the curser in the center of the golf ball, hold alt- a bullseye comes up similar to shown below- and click.



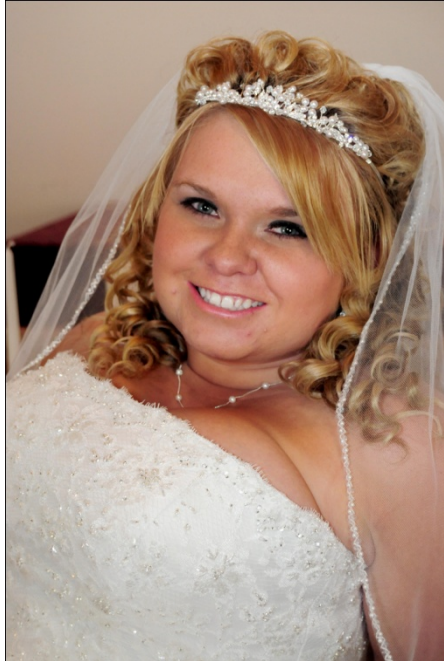
Go to another section of grass, where there is enough room to make another golf ball, and click and drag the mouse, as you do the data of the golf ball appears where you click.



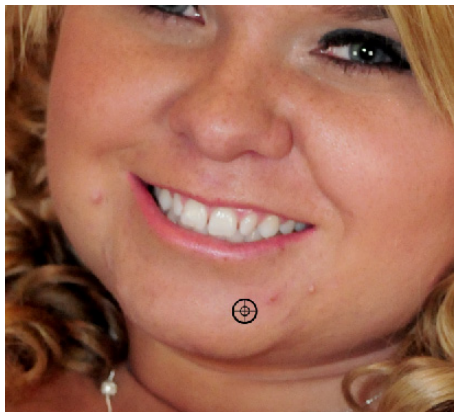
When you have a complete duplicate you are done.



- 2.** You can also use the Clone Stamp to remove blemishes.



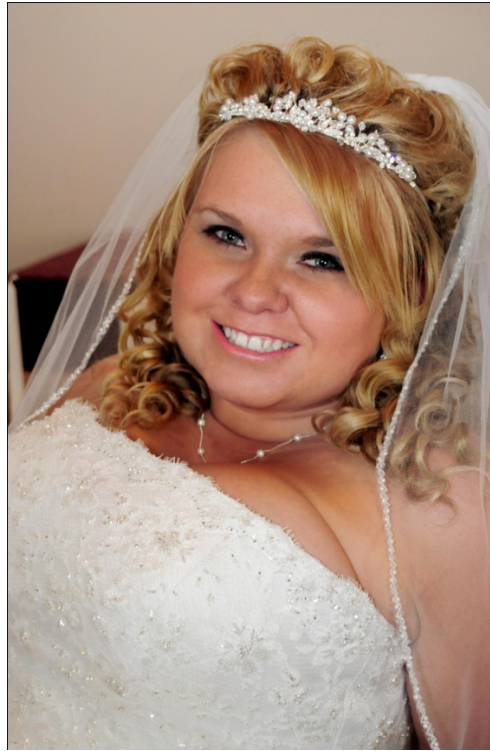
Select the clone stamp tool, make sure you have a small brush with 0% hardness
Select data to cover the blemishes



And begin cloning the non blemished area to the blemish of a similar skin tone



Select new data and go over the remaining blemishes.



3. You can also use the clone tool clone to erase objects from an image, similar to removing blemishes, but on a larger scale.

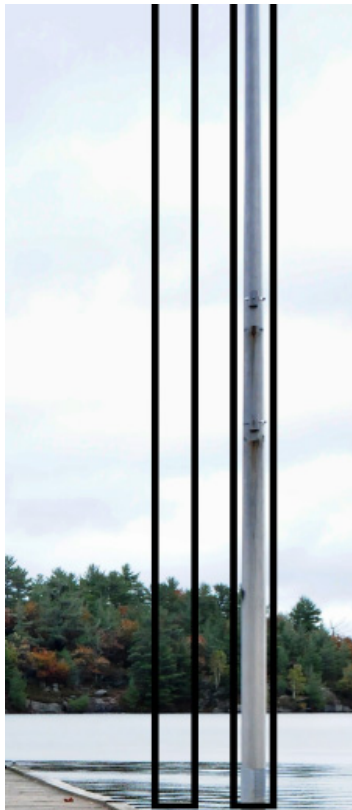


This is a nice image, except for the pole... so let's take it out.

Select the clone stamp tool, make sure the hardness is 0%.
Pick an area of sky to clone over the pole.



The goal is to replace the pole with the information in the box on the left.



Begin cloning.



Take special care with lining up the area in the trees, water and shore line.

